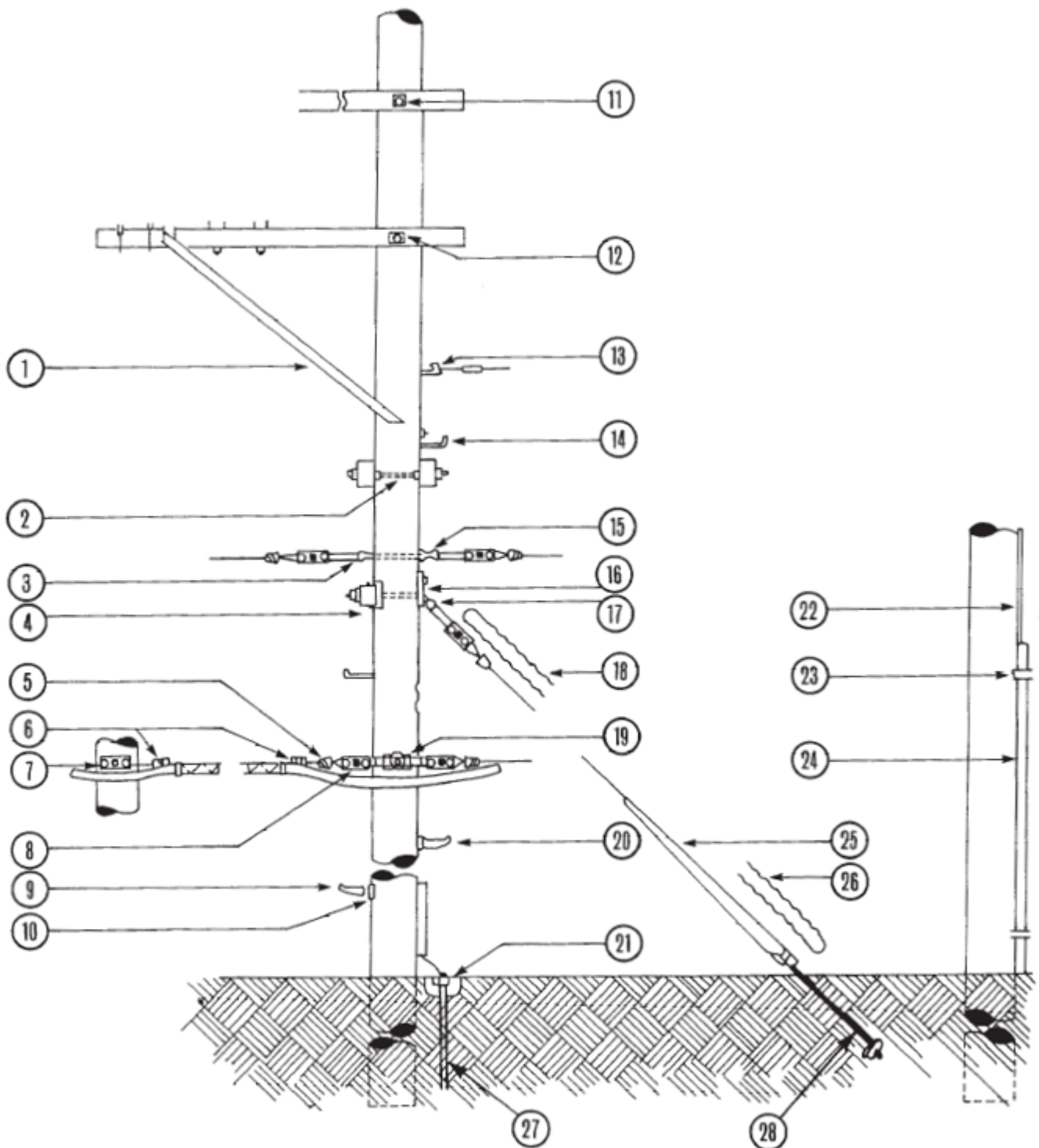


# Typical Aerial Plant Applications



- |                      |                              |                            |                            |
|----------------------|------------------------------|----------------------------|----------------------------|
| 1 Alley Arm Brace    | 8 Guy Clamp                  | 15 Drop Forged Eye Nut     | 22 Cable                   |
| 2 Double Arming Bolt | 9 Detachable Pole Strap      | 16 Guy & Load Plate        | 23 Cable Guard Strap       |
| 3 Thimbleye Bolt     | 10 Lag & Plate for Pole Step | 17 Angle Thimble           | 24 U Cable Guard           |
| 4 Pole Gain          | 11 Square Washer             | 18 Formed Wire Guy Deadend | 25 Guy Marker              |
| 5 Guy Wire Clip      | 12 Machine Bolt              | 19 Suspension Clamp        | 26 Formed Wire Guy Deadend |
| 6 Lashing Wire Clamp | 13 Drive Hook                | 20 Pole Step               | 27 Ground Rod              |
| 7 Suspension Clamp   | 14 Pole Step                 | 21 Ground Wire Clamp       | 28 Anchor                  |