

General

This instruction sheet provides procedures for installing and removing 800A, 800B, or 800E-type connecting blocks. The installation procedure in this instruction sheet assumes the panel mounting bracket has been installed and all wiring and cabling has been connected.

Instruction sheet 365-301-120-1 contains instructions for installing the panel bracket and wiring the individual blocks.

CAUTION:

Sprays and cleaners can damage plastic parts. Do not apply any sprays or cleaners to this product that have not been specifically approved. Be especially careful not to expose any plastic parts to chemicals containing trichlorethane, which is often found in cleaning fluids and lubricant sprays.

How to Contact Us

- To find out more about **Carrier Apparatus** products, visit us on the web at:
<http://www.commscope.com/>
- For technical assistance regarding Carrier Apparatus products: contact your local CommScope account representative or CommScope technical support at 1-800-344-0223.
- Report any missing or damaged parts to CommScope customer service in Omaha, Nebraska, at 1-866-539-2795.

References

- 365-301-120 — *800-Series and 900-Series DSX-1/1C Systems, System Reference Guide*
- 365-301-120-1 — *DSX-1/1C System—Panel Assemblies, 800/900/900-NSD/Tie Circuit/DIXI Installation and Cabling*

Tools Required

- Flat blade 0.1-to 0.2-inch (2.5 to 5 mm) Screwdriver

800A-TYPE CONNECTING BLOCK INSTALLATION

⇒ NOTE:

Refer to 365-301-120-1 for instructions on connecting power/ground and wiring to the 800A-type block.

1. Verify that all wiring/cabling is properly connected.
2. Lift and rotate the block upward, placing slot at bottom of fanning strip onto sawtooth ledge of panel mounting bracket (see Figure 1).
3. Push block into opening of panel mounting bracket until latch on block snap-locks into bracket.
4. Verify that block is properly secured into panel bracket by grasping block at top and pulling from front with a moderate amount of force (approximately 10 lbs. [4.5 kg.]).

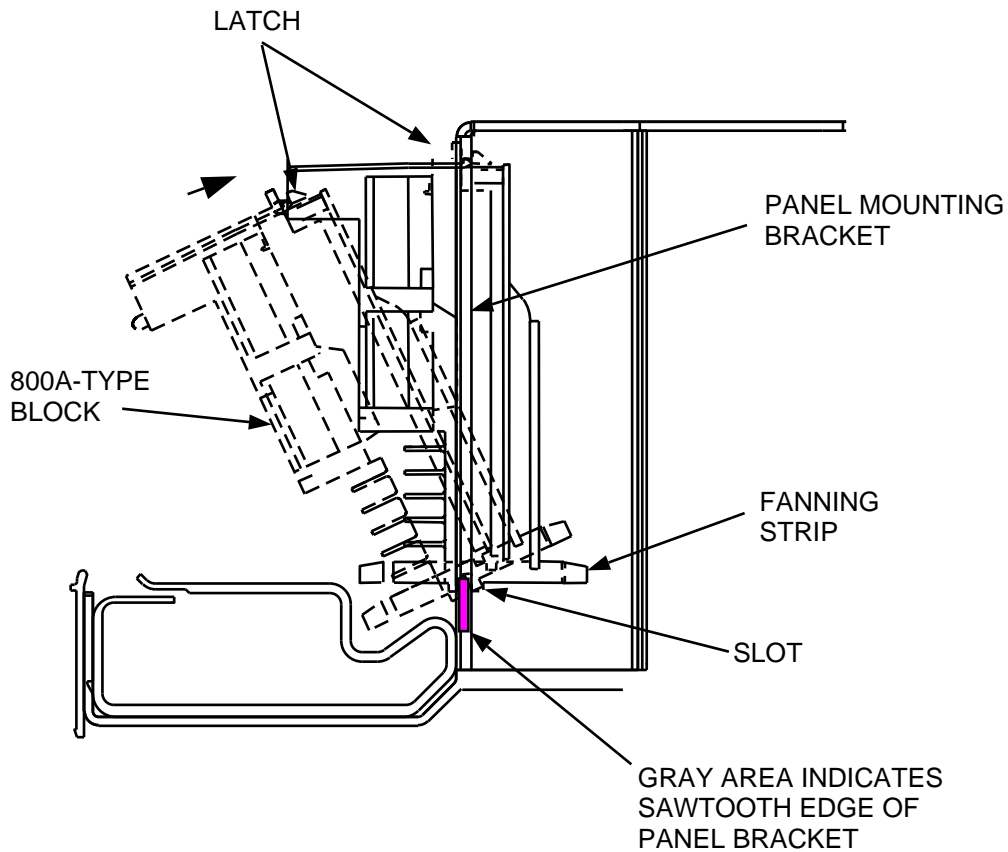


Figure 1. Installing 800A-Type Connecting Block

800A-TYPE DSX-1/1C CONNECTING BLOCK REMOVAL

1. Insert screwdriver into slot at top center of tie-circuit connecting block from front of bay, until blade contacts stop at back of latch (see Figure 2).
2. Rotate screwdriver 90° and pull connecting block straight back.
3. Lift block from mounting bracket.

⇒ NOTE:

Figure 2 shows an 800A2-A1 connecting block. This procedure may also be used for other connecting blocks that "snap" into a shelf mounting bracket.

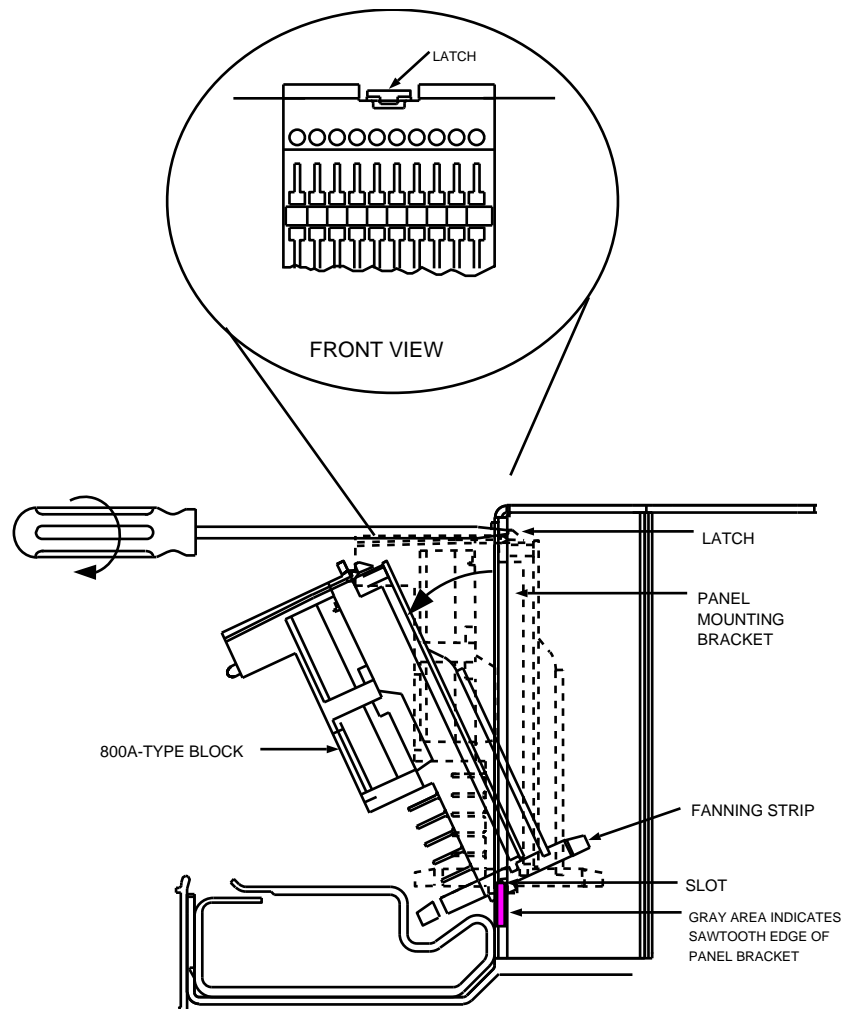


Figure 2. Removing 800A-Type Connecting Block

800B- OR 800E-TYPE TIE-CIRCUIT CONNECTING BLOCK INSTALLATION

⇒ NOTE:

Figure 3 does not show connecting block wiring/cabling. All wiring/cabling should be connected before snap-locking the block(s) into the panel mounting bracket. Refer to 365-301-120-1 for instructions on wiring/cabling 800B-type and 800E-type tie-circuit blocks.

1. Verify all wiring/cabling is properly connected.
2. Place the slot at the bottom of the fanning strip into sawtooth ledge of panel mounting bracket, then lift and rotate the block upward (see Figure 3).
3. Push block into opening of panel mounting bracket until latch on block snap-locks into bracket.

Verify block is properly secured into panel bracket by grasping block at top and pulling from front with a moderate amount of force (approximately 10 lbs. [4.5 kg.]).

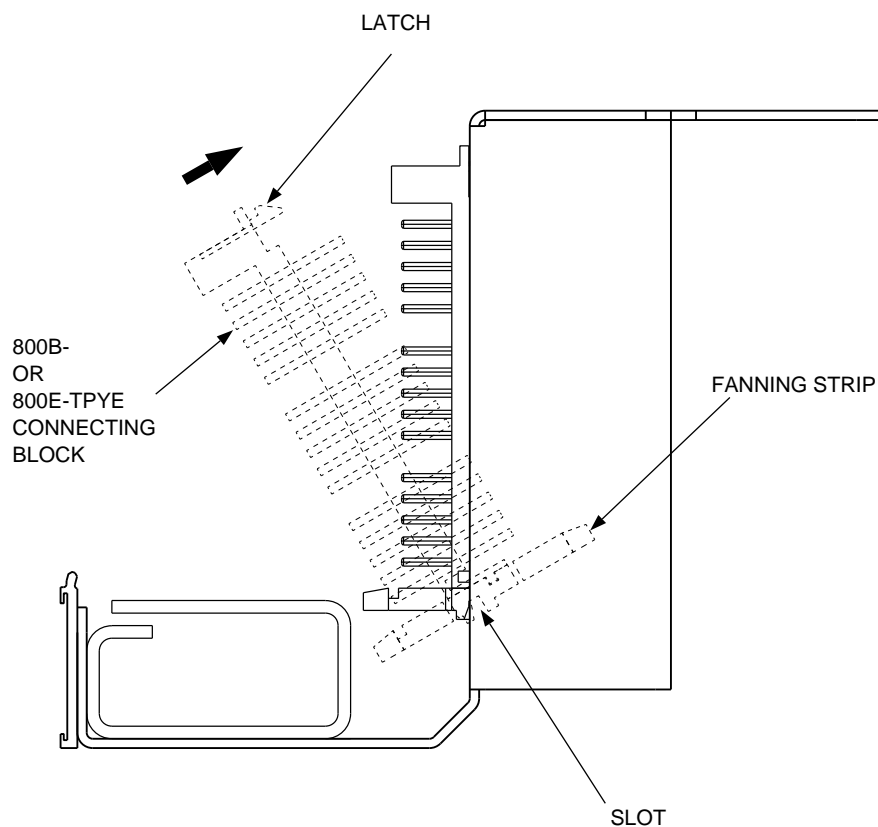


Figure 3. Installing an 800B-Type or 800E-Type Tie-Circuit Connecting Block

800B- OR 800E-TYPE TIE-CIRCUIT CONNECTING BLOCK REMOVAL

1. Insert screwdriver into slot at top center of tie-circuit connecting block from front of bay, until blade contacts stop at back of latch (see Figure 4).
2. Rotate screwdriver 90° and pull connecting block straight back.
3. Lift block from panel mounting bracket.

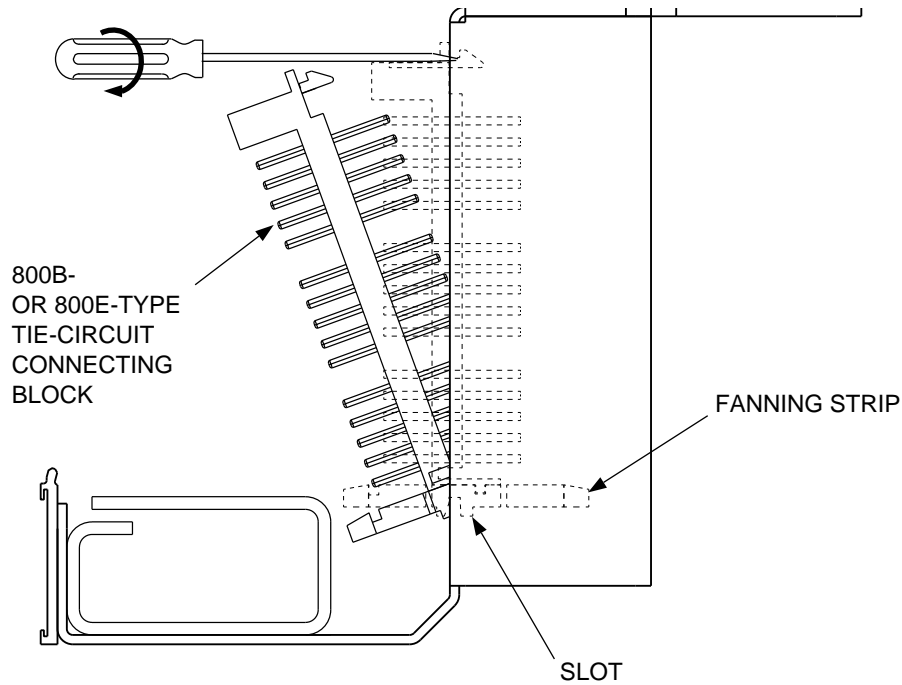


Figure 4. Removing an 800B-Type or 800E-Type Tie-Circuit Connecting Block