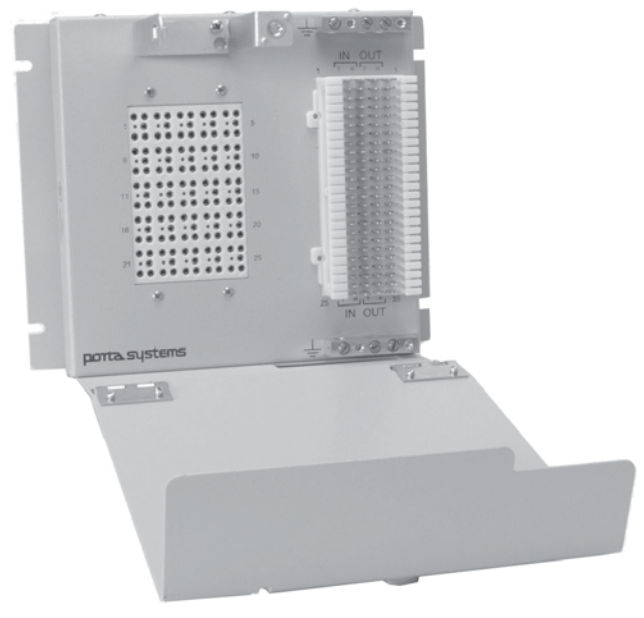


At the point of demarcation, Building Entrance Terminals, or BET's, safeguard communication equipment from damaging electrical surges that may get onto those incoming lines.

## FEATURES & BENEFITS

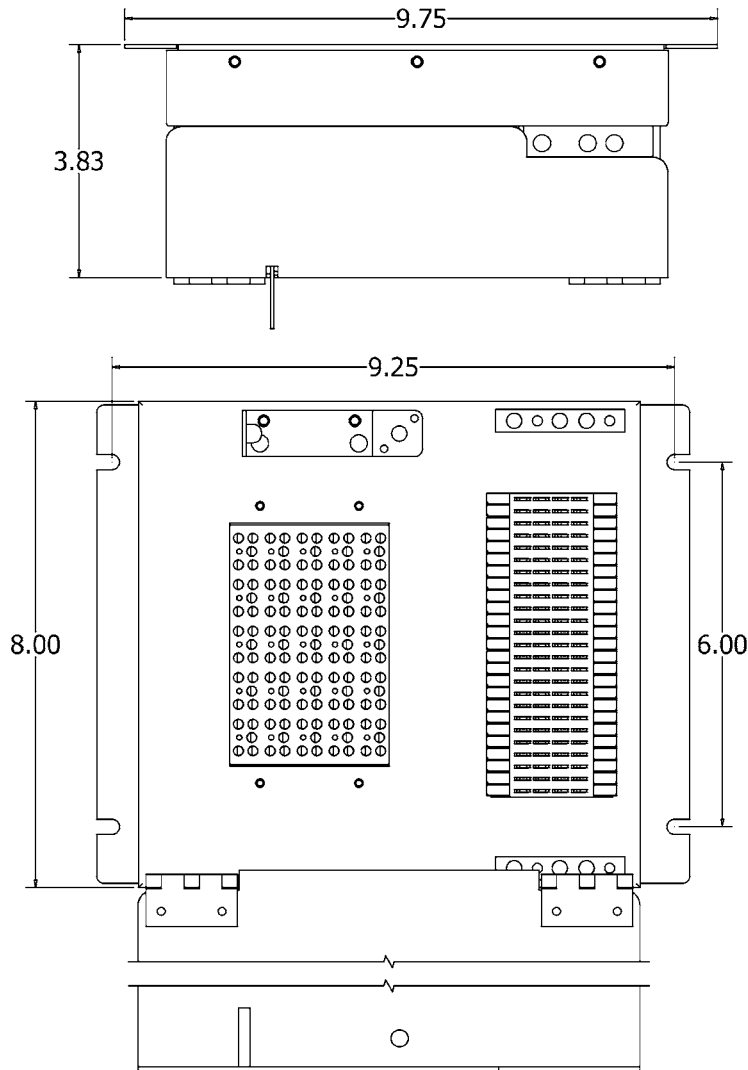
- UL 497 Listed for primary and secondary protection
- 66 input and output
- Available in 25, 50 and 100-pair configurations
- Available with 66, 110 or Stub inputs
- Available with 66 or 110 outputs
- Manufactured from 16 gauge, epoxy powder coated steel
- Cover included
- Uses industry standard 5-pin protector modules
- Available with factory installed protector modules for every application from 7.5V to 400V
- AQL Incoming Inspection Process
- ISO 9001:2000 registered facility
- Operating Temperature: -13°F to 149°F (-25°C to 65°C)



## ORDERING INFORMATION

Model#	Pair Count	Input	Output	Modules	Module Model#	Cover
25025-66-M66	25	66	66	None	NA	No
25025-66-M66C	25	66	66	None	NA	Yes
25025-66-M66PC	25	66	66	230V Gas Tube	175BCXN-230	Yes
25025-66-M66PCS	25	66	66	240V Solid State	175SCN-240	Yes

**MECHANICAL SPECIFICATIONS FOR 25025-66-M66 BUILDING ENTRANCE TERMINAL:**



Pair Count	Dimensions (height x width x depth)	Weight (approx.)*
25 PAIR	8" x 9.75" x 4.6" (20.3 cm x 24.8 cm x 11.7 cm)	7 lbs.

\* Weight - Add approx 0.5 oz per installed module.



For more information contact:  
 6851 Jericho Turnpike, Suite 170  
 Syosset, NY 11791 USA  
 Tel. 1-516-364-9300 : Fx. 1.516.682.4636  
 sales@portasystems.com (Americas)  
 sales@portasystems.co.uk (Europe)